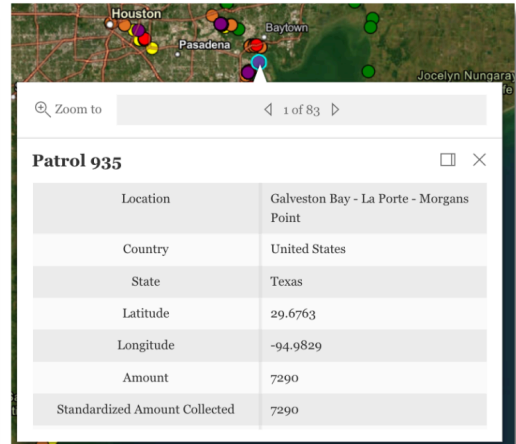
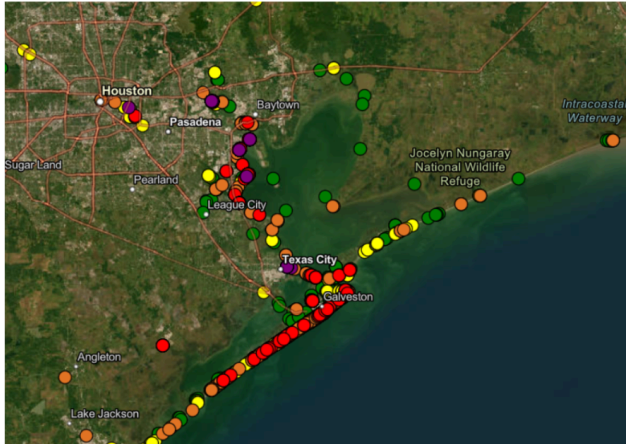


Interpreting the Map Data

Below is an area with many completed nurdle surveys, and report data for Patrol 935's survey. Use the map and report data to answer the questions below.



- Does this area have lots of nurdles or few nurdles? How do you know?
- What patterns do you notice in where surveys were completed on this map?
- In which location did Patrol 935 complete their survey?
- In what state did Patrol 935 gather their data?
- How many nurdles did Patrol 935 collect?

It's your turn to explore the map on nurdlepatrol.org. Try moving around the map and looking for...

- a nurdle survey where lots of nurdles were found.
- a nurdle survey where no nurdles were found.
- an area with lots of data.
- an area with no data.
- a nurdle survey that was completed by a large group.
- a nurdle survey that was completed over a year ago.
- a nurdle survey completed near a lake or river.