

How to Fill Out a Nurdle Report

Step 1: Click "Nurdle Report"



At www.nurdlepatrol.org, look at the top of the page. Click the button that says Nurdle Report.

Step 2: Fill Out the Survey Form

Your Name

Type your name or your teacher's name.

Group Name or School

Type your class name or school name (like "Mr. Lyle's Class").

Where You Looked

Type the place where you looked for nurdles. (Example: "East Beach," "River Park")

City & State

Type the name of the city and state you were in.

Date of Survey

Click the calendar and choose the date you did your nurdle search.

Minutes Searching

Write how many minutes you looked for nurdles (Example: 10, 15, or 20).

How Many People Searched

Write how many people were in your group.

Total Nurdles Found

Write the number of nurdles you found altogether!

Anything with a red asterisk * is required to fill out before you submit the survey.

Using the Nurdle Patrol Map

Step 1: Click "Map"



At www.nurdlepatrol.org, look at the top of the page. Click the button that says, "Map."

Step 2: Understanding the Map

Colored Dots: Each dot shows a place where people found nurdles.



Number of Nurdles Found:



Use the + and – buttons in the bottom right corner to zoom in or out. Move the map around by clicking and dragging with your mouse (or finger on a tablet).

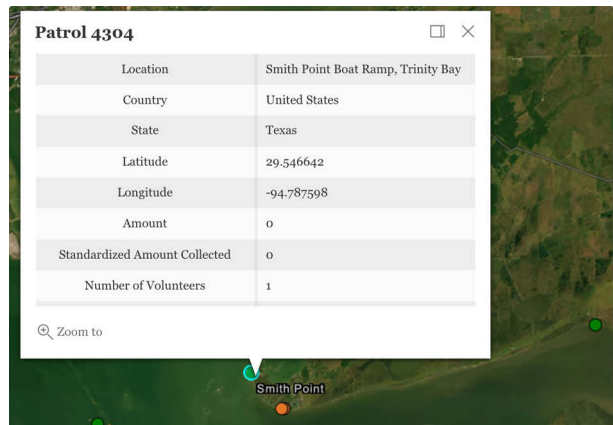
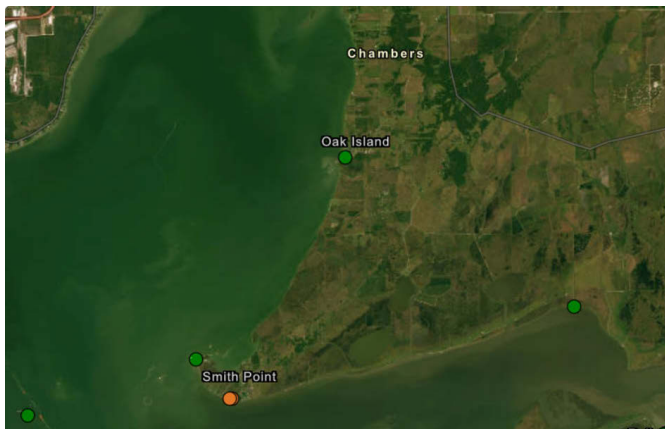
Step 3: Find Your Area

- In the search bar, type the name of your city or town. Next, press Enter. Now, look for colored dots near your location.

Step 4: View a Nurdle Report

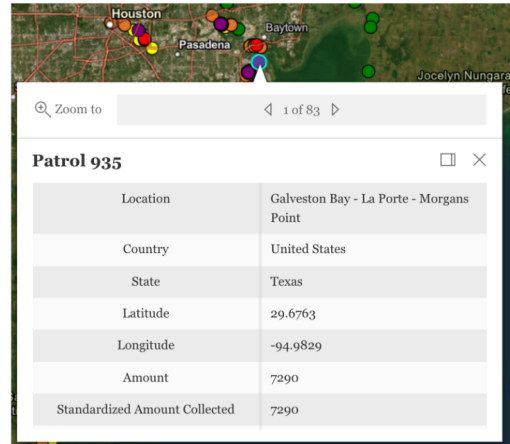
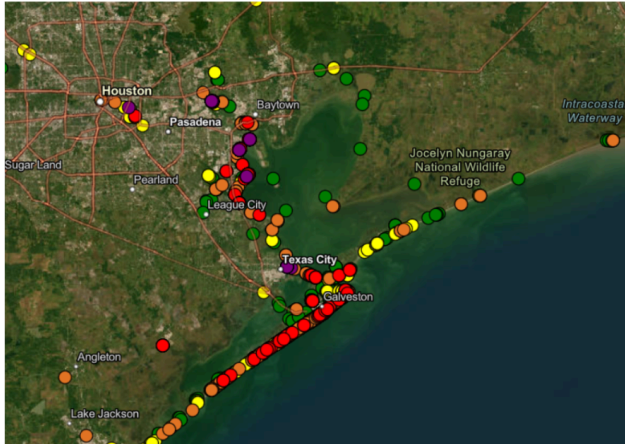
- Click on a colored dot near your area. A box will pop up showing location name, survey date, patrol group, number of nurdles found, and more.

○



Interpreting the Map Data

Below is an area with many completed nurdle surveys, and report data for Patrol 935's survey. Use the map and report data to answer the questions below.



- Does this area have lots of nurdles or few nurdles? How do you know?
- What patterns do you notice in where surveys were completed on this map?
- In which location did Patrol 935 complete their survey?
- In what state did Patrol 935 gather their data?
- How many nurdles did Patrol 935 collect?

It's your turn to explore the map on nurdlepatrol.org. Try moving around the map and looking for...

- a nurdle survey where lots of nurdles were found.
- a nurdle survey where no nurdles were found.
- an area with lots of data.
- an area with no data.
- a nurdle survey that was completed by a large group.
- a nurdle survey that was completed over a year ago.
- a nurdle survey completed near a lake or river.